

# Partnership for DSCSA Governance (PDG) Foundational Blueprint for 2023 Interoperability

## Chapter 5: Tracing Architecture Functional Design

Version 1.2  
July 15, 2023

© 2023 Partnership for DSCSA Governance, Inc. (PDG)

## Table of Contents

Table of Figures .....	3
Introduction .....	4
<i>Why traces are initiated?</i> .....	4
Purpose of the Document .....	4
Tracing Model .....	5
Tracing Model Components .....	6
<i>Trace Requester System</i> .....	6
<i>Trace Responder System</i> .....	6
<i>Digital Wallet</i> .....	7
<i>Trace Messages</i> .....	7
<i>DSCSA Authentication and Authorization Checking</i> .....	8
Credentialing for Tracing .....	8
Exception Processing and Supplemental Messaging .....	13
Messages Applied at the Entire Request Level (Illustrative) .....	13
Messages applied at the Request Line Level (Illustrative) .....	14
Tracing and Records Retention .....	14
Connectivity Requests .....	14
Trace Messages .....	15
TI Request Message Structure .....	15
TI Response Message Structure .....	17
TI Request / TI Response Messages - Technical PoC Rendering .....	19
TI Request / TI Response Messages - Data Attributes .....	20
Tracing Choreographies .....	31
DSCSA Authorities Not Participating in the PDG-defined EDDS Network .....	33
Trace Endpoint Acquisition .....	34
Recommendations .....	36
Configurations Under Consideration .....	36
Considerations .....	37
<i>Understanding Trace information</i> .....	37
<i>Returned Product</i> .....	37
<i>Dispensed, Destroyed or Expired Product</i> .....	37
<i>Intracompany Transfers</i> .....	38
<i>Repackaged Product</i> .....	40

<i>Misalignment Exceptions and Tracing</i> .....	40
Technical Requirements .....	40
Open Issues .....	41
Appendix A.....	42
Standards, Specifications, and Guidelines .....	42

## Table of Figures

Figure 1 - PDG-Defined EDDS Tracing .....	6
Figure 2 - TI/TS Trace Request and TI Response.....	9
Figure 3 - Illustration of TI Request/Response choreography using OpenAPI exchange method .....	10
Figure 4 - Illustration of TI Request / Response choreography using email exchange method .....	11
Figure 5 - Illustration of TI Request / Response choreography without credentials .....	12
Figure 6 - High-Level TI Request Message Structure .....	15
Figure 7 – Detail of TI Request Message Structure.....	16
Figure 8 - TI Response Message Design - High-Level.....	17
Figure 9 - TI Response Message Design - Detail.....	18
Figure 10 - High-Level Tracing Choreography.....	31
Figure 11 - Illustration: High-Level interaction and decisions of TI Requesters and Responders.....	32
Figure 12 - TI Request / Response End-to-End Interaction.....	33
Figure 13 - Assisting a Regulator outside of the PDG-defined EDDS network .....	34
Figure 14 - Trace Endpoint Acquisition Potential Options .....	35
Figure 15 - Trace Network Implementation Maturity.....	37
Figure 16 - Illustrations of Intracompany Transfers .....	39

## Chapter 5: Tracing Architectural Functional Design

### Introduction

**Why traces are initiated?** Product ownership traces are executed to support suspect, illegitimate, or recalled product investigations or for compliance audits.<sup>1</sup> Traces gather information about products, supply chain partners, and exchange of ownership. Tracing within the PDG-defined EDDS network has been limited to these investigation types to mitigate against gathering product, company, and supply chain information for nefarious or business intelligence purposes.

Within the PDG-defined EDDS network, traces are executed as a series of TI requests and TI responses initiated by the investigating party until that party has satisfied their investigation needs. Within the PDG-defined EDDS network, a trace requester may be a DSCSA-defined authorized trading partner (ATP<sup>2</sup>), industry-recognized trading partner (ATP equivalent<sup>3</sup>) or an industry-recognized DSCSA Authority.<sup>4</sup> There are many aspects to investigations driven by regulatory, legal, and business policy. A TI Request results in information gathered to help in the investigation. By its very nature, it also provides the Responder with some documented information about the investigation itself.

Secure exchange interface methods (ex: OpenAPI<sup>5</sup> or DIDComm<sup>6</sup>), the proper use of credentials and structured JSON messages conformant to the TI Request or TI Response schemas in the Appendix, represent the most technically secure, verifiable and trustworthy method of executing trace interactions. This chapter provides TI Request and TI Response message designs, proposed JSON schemas and credential usage that incorporate data element formatting, cardinality and mandatory/optional/contextual requirements developed in the PDG design process. It is expected that trading partners and solution providers will test, pilot, standardize and implement these methods, credentials and messages to accommodate trading partners within a full range of technical capabilities and constraints in support of early adoption and technical maturity as experience with tracing progresses. The [Recommendations](#) section provides insight into how this technical maturity might transition into a secure, interoperable distributed network.

### Purpose of the Document

Chapter 1 provides requirements and recommendations supporting interoperable tracing for the purposes of:

1. Investigating a suspect product.
2. Investigating an illegitimate product.
3. Investigating recalled product.
4. Demonstrating tracing capability as part of a compliance audit.

This chapter provides functional design and requirements to be implemented by trading partners, authorities and trace solutions to trace product using the PDG-defined DSCSA EDDS network in support of suspect product, illegitimate product, recalled product investigations and compliance audits.

---

<sup>1</sup> For the purposes of this document, Compliance Audits are considered a type of investigation.

<sup>2</sup> ATPs must prove their identity and that they have an appropriate Federal or State registration or license. See Chapter 6 – Credentialing for further information.

<sup>3</sup> ATP equivalents are organizations that are not required to hold ATP qualifying registrations or licenses but are trading partners that must comply with the DSCSA. See Chapter 6 – Credentialing for further information.

<sup>4</sup> DSCSA Authorities are authorities referenced in the DSCSA statute. See Chapter 6 – Credentialing for further information.

<sup>5</sup> OpenAPI Specification is an open-source format and initiative for designing and creating machine-readable interface files that are utilized in producing, describing, consuming, and visualizing RESTful APIs and web services.

<sup>6</sup> DIDComm, short for Decentralized Identifier Communication, is a communications methodology that works with the decentralized design of DIDs to provide private, secure interaction.

The Tracing Functional Design provides detailed information on *how* DSCSA Transaction Information and Transaction Statement information (TI/TS data) is gathered to form a trace of drug product ownership going back to the Manufacturer or Repackager in support of suspect, illegitimate and recalled product investigations utilizing the PDG-defined EDDS network.

This document is created based on the high-level requirements for interoperable tracing (Chapter 1) and functional requirements, constraints, and architectural design of the PDG Tracing Architectures Work Group and agreed to by PDG membership. Included in this section are detailed functional requirements including use cases, system inputs and outputs, process flows, diagrams, and sample tracing scenarios.

## Tracing Model

In the DSCSA context, tracing is the act of gathering the full set of TI/TS data available from trading partners such that the ownership history is established for the package or case in question. In practice, tracing a package or case is executed in a series of TI Requests and TI Responses upstream and/or downstream from the trading partner initiating the requests (or by a regulatory authority). By this process, the Requester acquires TI/TS datasets until the entire ownership chain is documented. [Figure 1](#) depicts the PDG-defined tracing model for all parties that seek to utilize the PDG-defined EDDS network. Upon receiving a trace request, trading partners (with the help of their solutions) provide the TI/TS data they received from their suppliers as well as TI/TS data they sent to their customers. The TI/TS data can either be sourced from the trading partner's TI/TS repository or accessed from TI/TS repository maintained by their seller.

The PDG-defined tracing functionality allows for flexibility for trading partners involved in suspect, illegitimate or recalled product investigations. Requesting trading partners or authorities can execute as many TI Requests as needed to support their investigation (a full end-to-end trace is not mandatory). In addition, Requesters may also specify one of three data set types to be returned in the trace response:

- **TI/TS:** the Responder returns all TI/TS datasets they have either received or sent.
- **All known owners:** the Responder returns information on all known owners they have information for (typically, who they purchased from, themselves and who they sold to).
- **Last known owner:** the Responder returns information on the last known owner they have TI for (typically, themselves or who they sold or returned the product to).

It is expected that TI Requests may result in the Responder wanting to contact the Requester to either resolve an exception or to gain clarity on the Request. Likewise, Requesters may want to contact the Responder for clarity on the response received. To support these communications, each TI Request and TI Response includes contact information of the Requester or Responder.

Each TI Response (see [Appendix 2 – TI Response JSON Schema](#)) data set also returns the trace endpoint for each trading partner involved in the TI/TS exchange, allowing the Requester to continue their TI Requests up or down the ownership chain.

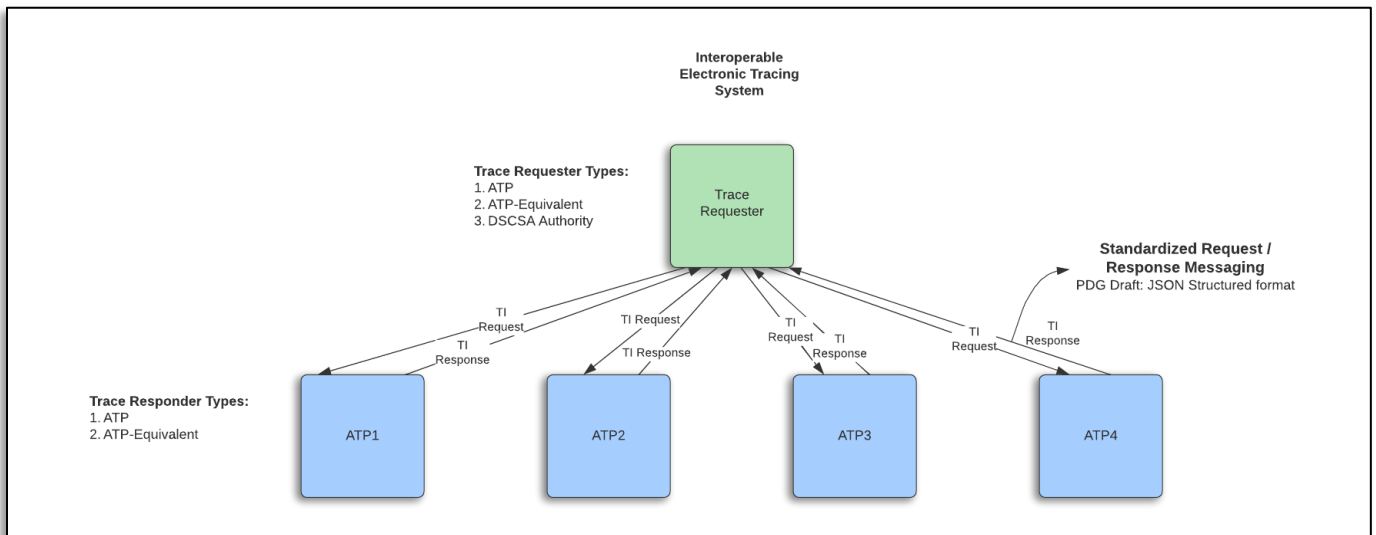


Figure 1 - PDG-Defined EDDS Tracing

## Tracing Model Components

The processing steps in this section are illustrative to give a sense of what the component does. The actual order of steps will be determined by the Tracing and Digital Wallet solutions.

### Trace Requester System

The Requester's system is used for the following processes required to submit a TI Request and receive a TI Response:

- Create TI Request message (allow for a Trace Requester to create TI Request in the Trace Request System).
- Request Requester's digital credential (ATP, ATP-Equivalent or DSCSA Authority) from the Digital Wallet.
- Submit TI Request message.
- Receive TI Response(s).
- Process TI Response.
  - Authenticate and Authorize Trace Responder.
    - Request Digital Wallet verify credential<sup>7</sup>; or
    - Perform Responder DSCSA authenticity<sup>8</sup> and authority<sup>9</sup> checks.
  - Check TI Response(s).
  - Transaction logging.

### Trace Responder System

The Responder's system is used for the following processes required to receive a TI Request and submit a TI Response:

- Receive TI Request.

<sup>7</sup> See [OCI Digital Wallet OpenAPI specifications](#).

<sup>8</sup> Determine the identity of the Responder.

<sup>9</sup> Determine if the Responder is an Authorized Trading Partner (ATP), or an ATP Equivalent.

- Authenticate and Authorize Trace Requester.
  - Verify credentials (see Digital Wallet); or
  - Perform Requester DSCSA authenticity<sup>10</sup> and authority<sup>11</sup> checks
- Check TI Request Message.
- Process TI Request Message.
  - Create TI Response Message.
  - Present TI Request and available TI Response information for Trace Responder review
  - Request TI Responder ATP, ATP-Equivalent credential presentation from Digital Wallet.
  - Submit TI Response message.
  - Transaction logging.

### **Digital Wallet**

Digital wallets of the TI Requester or TI Responder are invoked by the TI Requester or TI Responder solution system to provide:

- Authenticate access to Digital Wallet
- Generate ATP, ATP-Equivalent or DSCSA Authority verifiable credential in JWT presentation for use in TI Requests and TI Responses
- Check the received JWT presentation of the ATP, ATP-Equivalent or DSCSA Authority verifiable credential

### **Trace Messages**

Traces are accomplished through a series of interoperable TI Requests and TI Responses. Each set of Requests and Responses provide information on the ownership of the product and provide the endpoint where the Requester can continue their product ownership trace with the previous or next owner of the product.

#### TI Request Message

Provides interoperable information about the Requester, the products they are seeking to trace, the circumstance of the investigation being prosecuted, and the kind of information requested to be returned.

#### TI Response Message

Provides interoperable information about the Responder, the products that the Requester is tracing, the kind of information requested to be returned and trace endpoints associated with known buyers and sellers for the Requester to use in continuing their trace.

#### Trace Endpoints

Each trading partner (ATP and ATP-Equivalent) shall exchange their preferred trace method and trace endpoint where TI Request messages can be submitted. Initially during the proof-of-concept or proof-of-technology phase(s)<sup>12</sup>, it is thought that email addresses will be used as trace endpoints to exchange standardized TI Request and TI Response messages. As the trace eco-system enters the production phase<sup>13</sup> the PDG-defined EDDS network will move to OpenAPI or DIDComm to exchange messages securely and privately.

---

<sup>10</sup> Determine the identity of the Requester.

<sup>11</sup> Determine if the Trace Requester is an Authorized Trading Partner (ATP), an ATP Equivalent, or a DSCSA Authority.

<sup>12</sup> Assessment of trace volumes, trial of TI Request/Response messaging and trial of exchange mechanisms.

<sup>13</sup> See [Recommendations](#).

## **DSCSA Authentication and Authorization Checking**

The preferred method of checking the authenticating (determine identity) and authorizing (determine ATP, ATP-Equivalent, DSCSA Authority status) of the Requester or Responder is using W3C standard digital credentials (see Chapter 6, Credentialing) as documented by OCI open specifications<sup>14</sup>. During the transition to digital credentials, TI requests and TI responses may be exchanged without the proper digital credential, leaving the receiving party with the task of manually:

- authenticating the identity of the Requester or Responder who sent the message
- authorizing the requesting or responding entity by checking their ATP, ATP-Equivalent or DSCSA Authority status

## **Credentialing for Tracing**

TI/TS Exchange takes place between established trading partner pairs in a controlled electronic environment where the “credentialing” requirement is fulfilled by existing Know Your Customer / Know Your Supplier (KYC/KYS) processes that each trading partner is responsible for. Alternately, PI Verification and Tracing is architected to occur using decentralized architecture where individual trading partners (through their systems) acquire another trading partner’s digital endpoint, establish a digital connection, and authenticate each other in the digital interaction process (either PI Verification or tracing) using digital credentials or manual Authentication and Authorization processes. These interactions often occur between non-adjacent trading partners who have not performed Know your Customer / Know Your Supplier processes prior to the PI Verification or Tracing digital interactions.

The digital credential architecture adopted by PDG<sup>15</sup> is leveraged in TI Request/Response interactions to support an efficient, interoperable, electronic, and decentralized eco-system. Digital credentials in TI Requests or Responses provide cryptographically verifiable Identity and authority<sup>16</sup> information of the entity Requesting TI or Responding to TI Requests.

However, PDG recognizes that individual trading partner pairs may address “credentialing” outside the PDG-defined DSCSA EDDS network. Two are possible, however they fall outside the PDG-defined EDDS network architecture for Tracing:

**KYC/KYS and direct connections:** Employs the same processes TI/TS exchange relies on for trading partner pairs to accomplish authentication and authorization through their existing processes for establishing a trading partner’s identity and ATP status AND by establishing direct and secure connections between their systems.

**Ad-Hoc credentialing process:** For an entity to respond to a PI Verification or Tracing request, they must first ascertain the requester’s identity and “authorized” status. This process could be initiated using the Requester’s “Contact Information”. The trading partners would then perform their internal processes for establishing a trading partner’s identity and ATP status. Each subsequent TI Request will trigger this same process.

Chapter 6 addresses the use of Decentralized Identity and Verifiable Credentials as the means to support the decentralized architecture and requirements for an interoperable, PDG defined EDDS network including tracing.

---

<sup>14</sup> OCI: Open Credentialing Initiative: [www.oc-i.org](http://www.oc-i.org).

<sup>15</sup> PDG Blueprint, Chapter 6: Credentialing and Trading Partner Authentication and Authorization.

<sup>16</sup> The Requester or Responder is either an ATP, ATP-Equivalent or a DSCSA Authority.



## High-Level Functional Interactions

Figure 2 depicts a typical interaction between a TI Requester and TI Responder. Each ATP or ATP-Equivalent

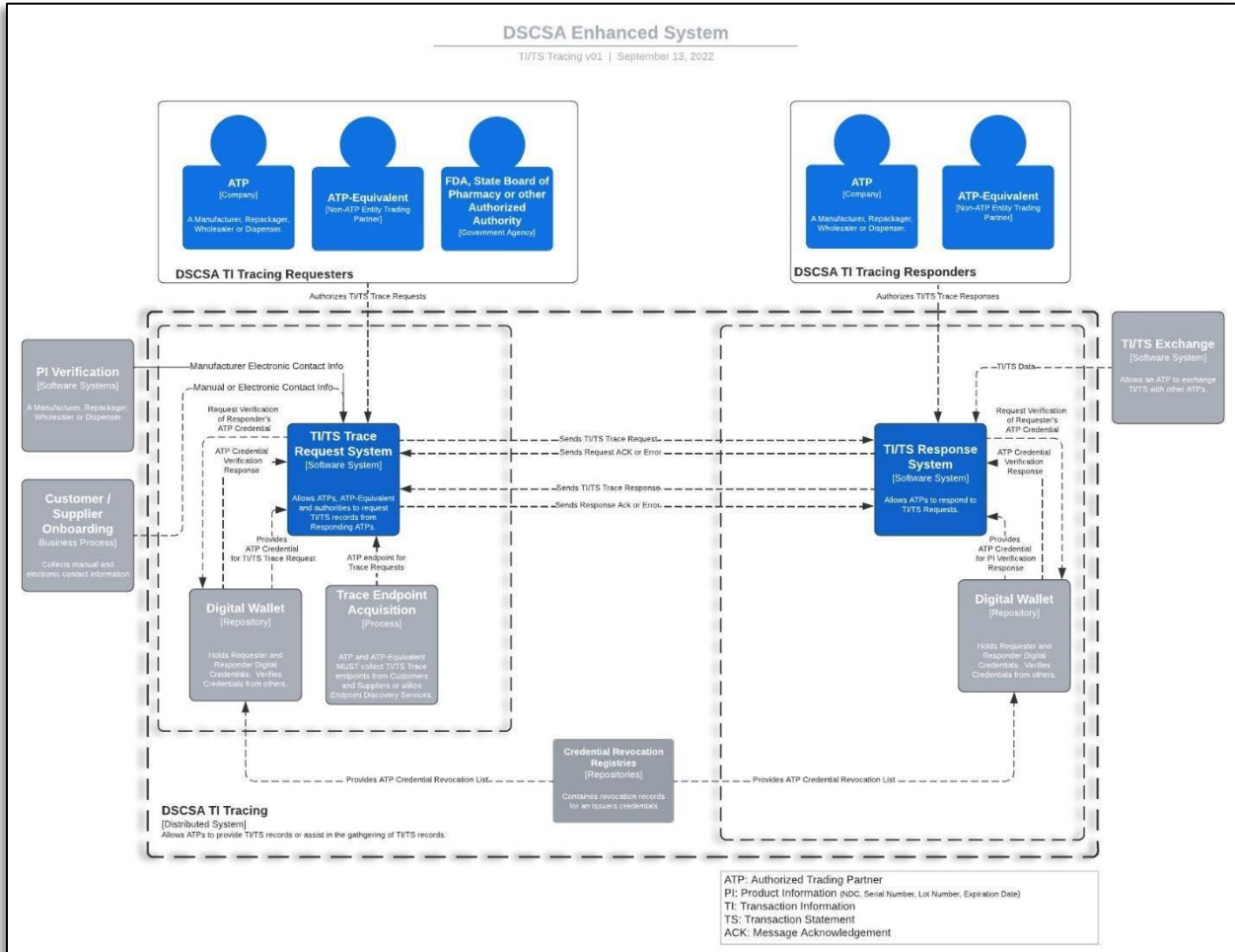


Figure 2 - Ti/TS Trace Request and Ti Response

Figure 3 provides an illustration of how a TI Request / TI Response exchange might take place using OpenAPI as the exchange mechanism. In this example, standard OpenAPI acknowledgement of messages received (TI Requests and TI Responses) are used.

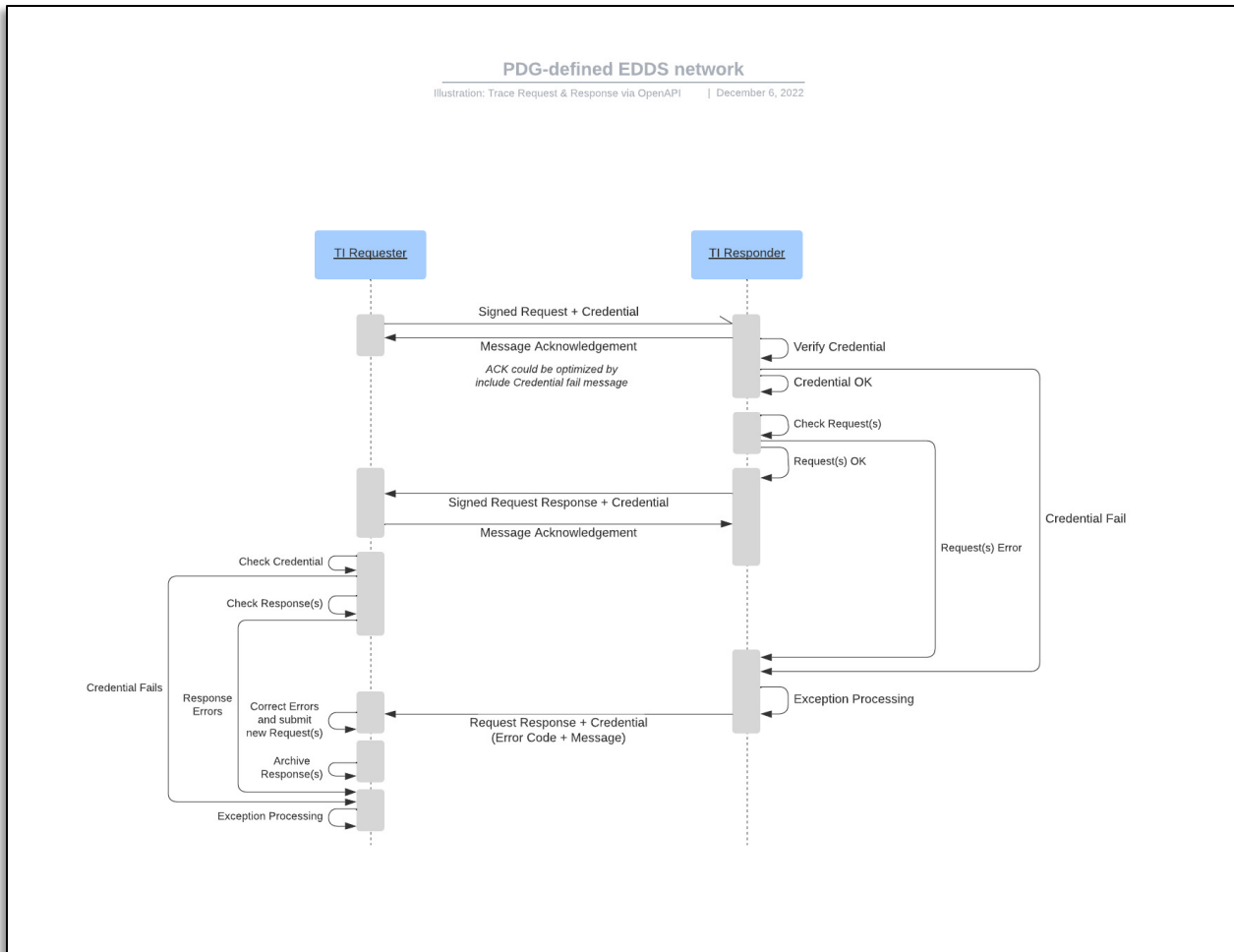


Figure 3 - Illustration of TI Request/Response choreography using OpenAPI exchange method

Figure 4 provides an illustration of how a TI Request / TI Response exchange might take place using email as the exchange mechanism. In this example, the party receiving a request or response must send an acknowledgement to the sender. This can be done manually or through application/email configuration.

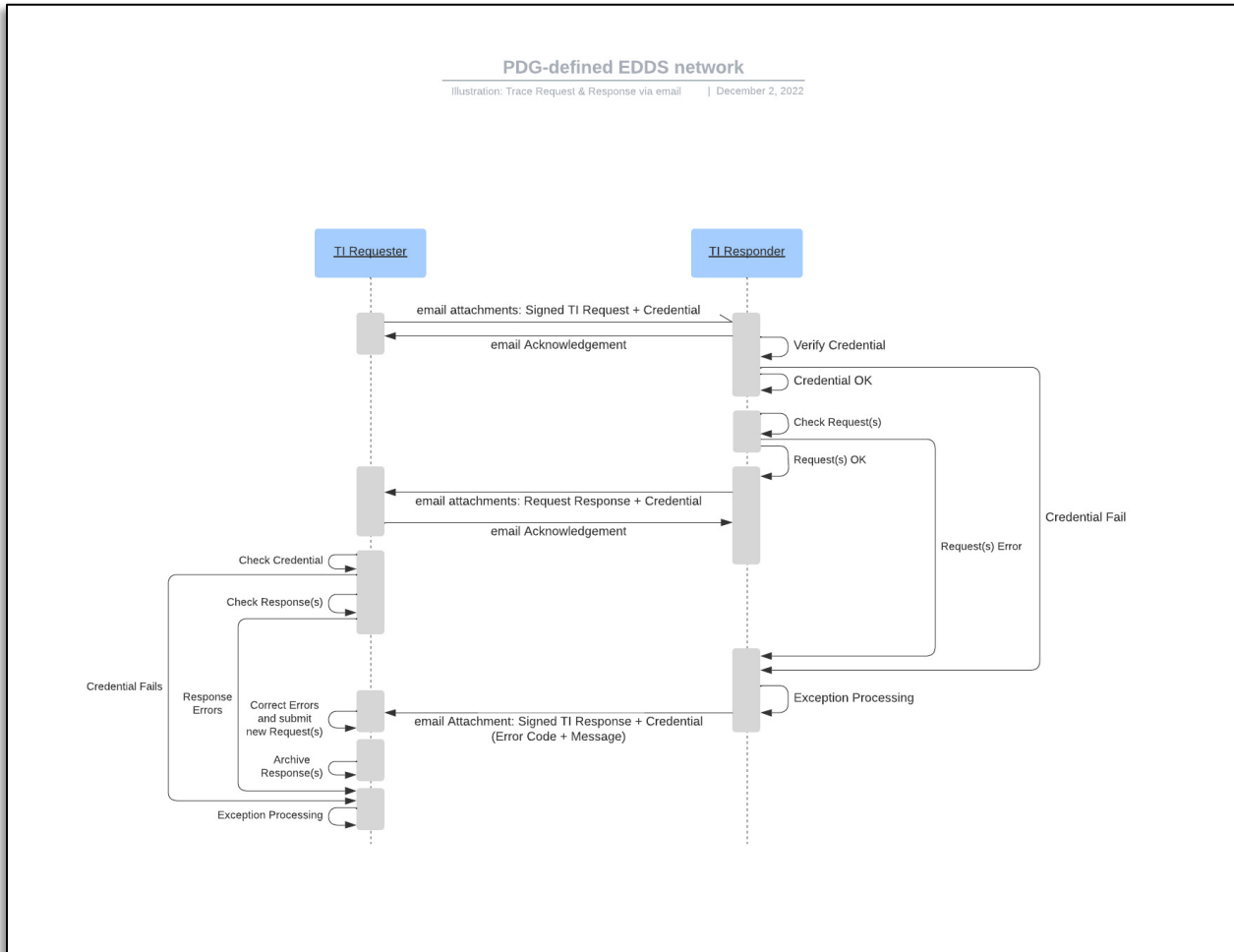


Figure 4 - Illustration of TI Request / Response choreography using email exchange method

Figure 5 provides an illustration of how a TI Request / TI Response exchange<sup>17</sup> (exchange method unspecified) might take place without using digital credentials as specified in this chapter and Chapter 1. It is anticipated that there will be a transition period for using credentials. As an illustration, trading partners are aware of their current onboarding processes from a timing and cost perspective that will need to be used (Figure 5, Manual Identity and ATP status discussion).

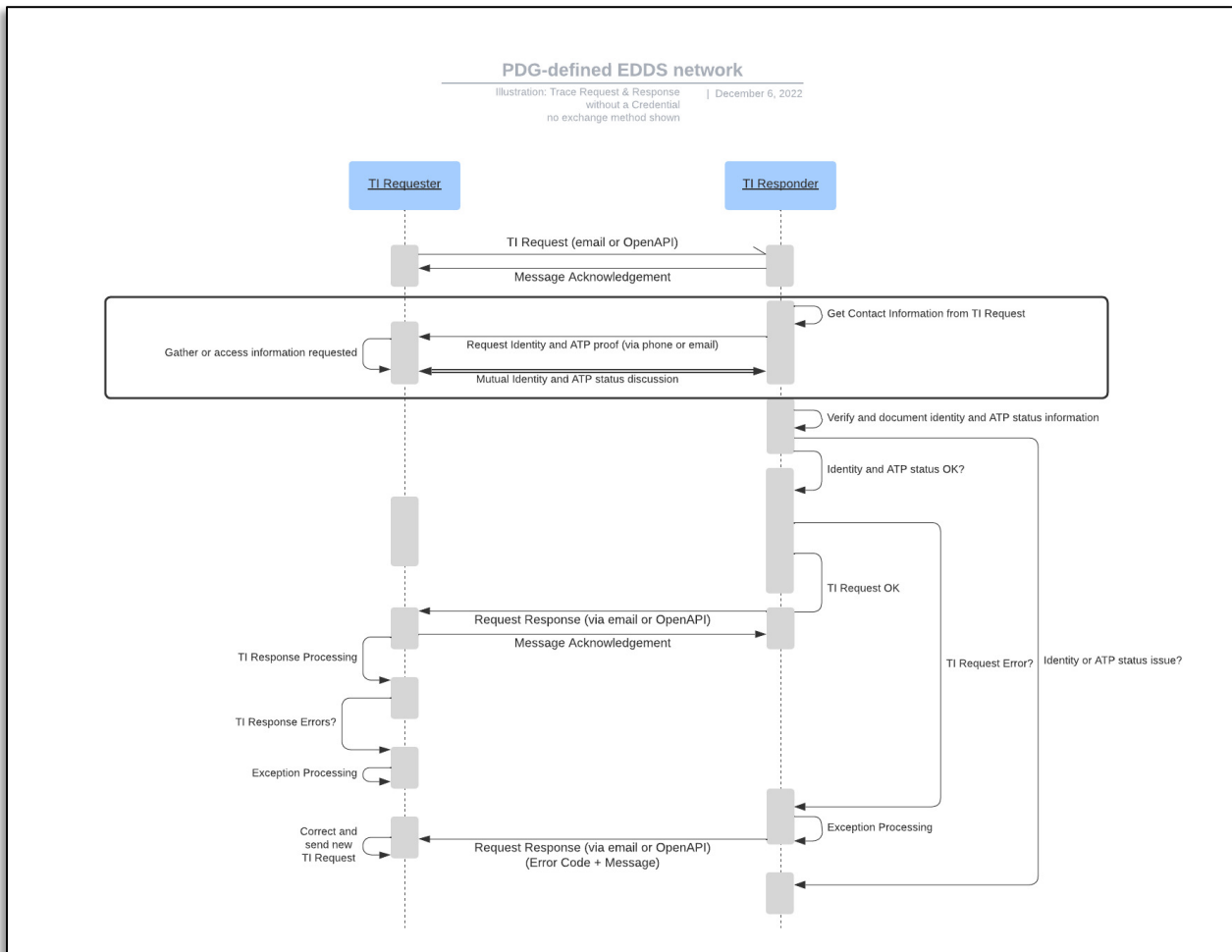


Figure 5 - Illustration of TI Request / Response choreography without credentials

<sup>17</sup> See *TI Request Structure and TI Response Structure*.

## Exception Processing and Supplemental Messaging

Figures 4, 5, and 6 illustrate error messages provided by the Responder. Requesters can correct errors in their request and submit the corrected TI Request. If the Requester is unable to submit an acceptable Request, they can use the Contact Information provided in the TI Response Party section of the TI Response message to contact the Responder.

Supplementary messages can be provided addressing the entire Request, or for individual Requests identified by the Request Line Number. It is envisioned that standard supplementary and error messages will be developed as part of the TI Request / TI Response standardization process. The following messages are illustrative and are applied at the Request set and individual Request levels.

### Messages Applied at the Entire Request Level (Illustrative)

These supplemental or exception messages apply to the entire Request message identified by the TI Request ID.

Code	Message	Type	Meaning
xx1	Credential verification failed	Exception	Checks of the ATP Credential provided failed.
xx2	Request parameter error	Exception	Required parameter not provided, or invalid combination of parameters provided (ex: non-authority attempting a lot-level request).
xx3	Compliance audit Request received	Supplemental	The Responder acknowledges the Requester's Investigation Reason Attestation. No TI or ownership data is provided.

### Messages applied at the Request Line Level (Illustrative)

These supplemental or exception messages apply to an individual Request within the Request message identified by the Request Line Number.

Code	Message	Type	Meaning
xx1	Request Closed	Supplemental	Indicates that there will be no further action on the Responder's part and the Responder considers the Request closed.
xx2	No TI found for the Request	Supplemental	The Responder does not have any TI or Ownership info matching the individual Request.
xx3	Response Delayed	Supplemental	The Responder is researching the Request and will respond at a later time.
xx4	Request addressed via your supplied Contact Information	Supplemental	The Responder has contacted the Requester and addressing the Request outside of this channel.
xx5	Request GTIN, NDC, Lot Number or Serial Number not formatted correctly.	Exception	One or more of the key attributes provided in the Request are not formatted correctly.
xx6	Response includes an Intracompany Transfer.	Supplemental	Requester's Transfer-To party of their inbound TI and Requester's Transfer-From party of their outbound TI may not match as a result of an intracompany transfer.

### Tracing and Records Retention

Trading partners are required to keep records of Suspect and Illegitimate product investigations for six (6) years after the investigation. Your company's compliance policy may require TI/TS datasets acquired through the tracing process be retained as part of the investigation documentation set archived.

### Connectivity Requests

It is envisioned that when OpenAPI or DIDComm are used to exchange messages securely and privately, provisions are made to test for connectivity to another party's system in the network.

## Trace Messages

As a Requester, an ATP, Authority, or ATP-Equivalent organization may request TI for an individual or multiple pharmaceutical package or case.

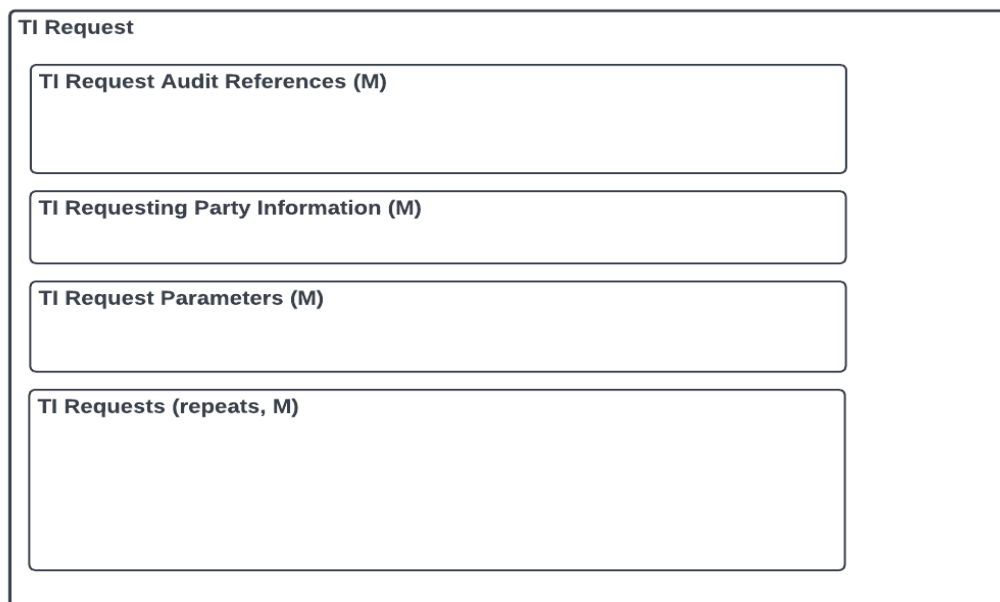
### TI Request Message Structure

*Figure 6* illustrates the high-level organization of a TI Request message, designed to provide a responding organization with:

- **Audit references** including TI Request ID and Request Timestamp
- **Requesting Party Information**, providing the Responder with a verifiable credential, contact information and electronic callback information
- **Request Parameters**, including information about the related investigation, the kind of information being requested, and other information related to the request
- **Individual Requests**, indicating the individual GTIN or NDC and Serial Number or Lot Number (only for DSCSA Authority requests for recalled product).

This provides the responding organization everything they need to understand the circumstances of the request, research their records, review both the request and assemble response(s) and respond to the Requester. *Figure 7* illustrates the detailed organization of the TI Request message.

As TI Requests are only allowed for the purposes of Suspect, Illegitimate or Recalled product, or for the purposes of a compliance audit, TI Request and TI Response records should be retained as part of those investigation records.



*Figure 6 - High-Level TI Request Message Structure*

## PDG TI Request Structure

Detail v13 | November 15, 2022

**TI Request**

**TI Request Audit References (M)**

- TI Request ID (M)
- TI Request Timestamp (M)

**TI Requesting Party Information (M)**

**DSCSA Credential Presentation (O)**

**Contact Information (M)**

- Person or Department Name (M)
- Contact Method (M): Phone Number or Email Address

- Requester GLN (O)
- Callback Address (M)

**TI Request Parameters (M)**

- **Response Type Requested (provide one), (M)**
  - Transaction Information
  - All Known Owners
  - Last Known Owner
- **Investigation Reason Attestation (provide one), (M)**
  - Suspect Product Investigation
  - Illegitimate Product Investigation
  - Recalled Product Investigation
  - Compliance Audit
- **Investigation Circumstances (M)**
- **3911 Incident Number (O)**
- **Recall Depth (O)**
- **Recall Request Level (provide one) (C)**
  - Serial Number
  - Lot Number

**Individual Requests (repeats, (M))**

- Request Line Number (M)

**Product Identifier (provide one), (M)**
  - GTIN
  - NDC

**Serial Number or Lot Number (provide one), (M)**
  - Serial Number
  - Lot Number

Draft

Figure 7 – Detail of TI Request Message Structure

© 2023 Partnership for DSCSA Governance, Inc. (PDG)

Page | 16

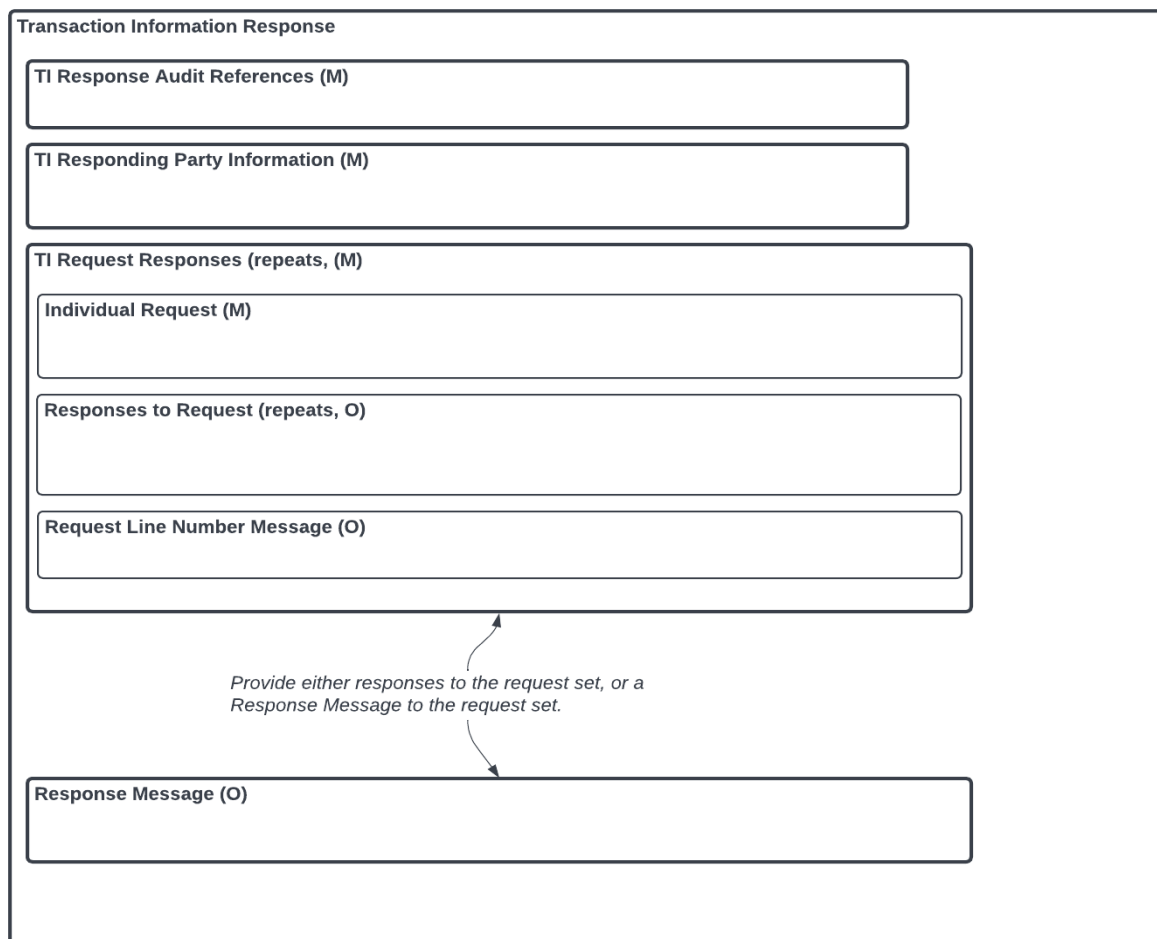


## TI Response Message Structure

*Figure 8* illustrates a high-level view of the TI Response message, designed to provide a requesting organization with:

- **Audit references** including TI Request ID, TI Response ID and Response Timestamp
- **Responding party Information**, providing the Requester with a verifiable credential and contact information.
- **Request Responses**, providing Transaction Information or Organizational Information based on the Requester's Response Type Requested
- **Response Message**, is provided in place of Transactional or Organizational information if there are exceptions that address the entire Request set.

As multiple items can be requested in a TI Request message, the Response message provides Audit and Responding party information as well as responses to each individual request line number. In addition, a message can be provided in the "Response Message" in response to the entire request set. It is envisioned that this is where exception processing messages to address Request parameter errors, ATP Credential verification failure and other exceptions at the request set level. *Figure 9* illustrates the detailed organization of the TI Request message.



*Figure 8 - TI Response Message Design - High-Level*

<p><b>Transaction Information Response</b></p> <p><b>TI Response Audit References (M)</b></p> <ul style="list-style-type: none"> <li>• TI Response ID (M)</li> <li>• TI Request ID (M)</li> <li>• TI Response Timestamp (M)</li> </ul> <p><b>TI Responding Party Information (M)</b></p> <p><b>Contact Information (M)</b></p> <ul style="list-style-type: none"> <li>• Person or Department Name (M)</li> <li>• Organization Name (M)</li> <li>• Contact Method (M), Phone Number or Email Address</li> </ul> <p><b>DSCSA Credential Presentation (O)</b></p> <ul style="list-style-type: none"> <li>• Responder GLN (O)</li> </ul>
<p><b>TI Request Responses (repeats, (M))</b></p> <p><b>Individual Request (M)</b></p> <ul style="list-style-type: none"> <li>• Request Line Number (M)</li> <li>• Response Type Requested (provide one) (M) <ul style="list-style-type: none"> <li>■ Transaction Information</li> <li>■ All Known Owners</li> <li>■ Last Known Owner</li> </ul> </li> </ul> <p><b>Product ID (M, provide one)</b></p> <ul style="list-style-type: none"> <li>■ GTIN</li> <li>■ NDC</li> </ul> <p><b>Serial Number or Lot Number (M, provide one)</b></p> <ul style="list-style-type: none"> <li>■ Serial Number</li> <li>■ Lot Number</li> </ul>
<p><b>Responses To Request (O)</b></p> <p><b>Transaction Information Response (repeats, (C))</b></p> <p><b>Product Data (M)</b></p> <ul style="list-style-type: none"> <li>• GTIN (M)</li> <li>• NDC (M)</li> <li>• Drug Name (M)</li> <li>• Strength (M)</li> <li>• Dosage Form (M)</li> <li>• Container Size (M)</li> <li>• Number of Containers (M)</li> </ul> <p><b>Product Production Data (M)</b></p> <ul style="list-style-type: none"> <li>• Lot Number (M)</li> <li>• Serial Number (M)</li> <li>• Expiration Date (M)</li> </ul> <p><b>Ownership From Information (M)</b></p> <p><b>Ownership To Information (M)</b></p> <p><b>Drop Ship Indicator (M)</b></p> <p><b>Drop Ship To Information (O)</b></p> <ul style="list-style-type: none"> <li>• PO Associated With TI (O)</li> <li>• Transaction Statement (M)</li> <li>• Direct Purchase Statement (O)</li> <li>• Date of Shipment (M)</li> <li>• Date of Transaction (O)</li> </ul> <p><b>Owner Information Response (repeats, (C))</b></p> <p><b>Known Owner Information (M)</b></p> <p><b>Company Information (M)</b></p> <ul style="list-style-type: none"> <li>• GLN (M)</li> <li>• Company Name (M)</li> <li>• Company Address (M)</li> <li>• TI Request Connectivity Information (M)</li> </ul> <p><b>• GTIN</b></p> <p><b>• Serial Number</b></p> <p><b>• Date of Shipment (M)</b></p> <p><b>• Date of Transaction (O)</b></p> <p><b>Request Line Number Messages (O)</b></p> <ul style="list-style-type: none"> <li>• Message Code (O)</li> <li>• Message Description (M)</li> </ul> <p><b>Response Message (O)</b></p> <ul style="list-style-type: none"> <li>• Message Code (O)</li> <li>• Message Description (M)</li> </ul>

Figure 9 - TI Response Message Design - Detail

## TI Request / TI Response Messages - Technical PoC Rendering

“JSON is an open standard file format and data interchange format that uses human-readable text to store and transmit data objects consisting of attribute–value pairs and arrays. It is a common data format with diverse uses in electronic data interchange, including that of web applications with servers.”<sup>18</sup>

As a proof of concept and recommended start towards standardization, the TI Request and TI Response messages are rendered in JSON format to aid in standardizing attribute definitions, constraints, and attribute format. A TI Request JSON schema and a TI Response JSON schema is provided for individual Trace solutions to uniformly validate TI Request and TI Response JSON files. An example message in JSON that validates against the schema is also provided here.

For the purposes of this document, the JSON designs are meant to allow room for the use of email, OpenAPI and DIDComm. The next phase (Piloting) will require technical work to modify the current design for use with specific exchange methods. For example, the credential is optional in the current design, which gives the opportunity to test providing a credential in the TI Request or TI Response JSON or in addition to (along with) The TI Requestor TI Response JSON (may accommodate low capability email solutions). Also, the exact rendering (JWT, JWS, etc.) of the credential may be different to fit best with the specific exchange method (email, OpenAPI or DIDComm).

---

<sup>18</sup> <https://en.wikipedia.org/wiki/JSON>.

## TI Request / TI Response Messages - Data Attributes

The following table documents the data attributes used in the TI Request and TI Response messages. A more accurate view into the attributes can be found in the schemas themselves (see Appendix) and in the companion documents “PDG\_TI\_Request\_v13.pdf” and “PDG\_TI\_Response\_v14.pdf.”

*Table 1 - TI Request and TI Response message data attributes*

Attribute	Definition	Type	Notes	TI Request Message	TI Response Message
3911IncidentNumber	The 3911 Incident Number assigned by the FDA	String		✓	
apiCallbackAddress	The URI address where the TI Response is to be sent.	String		✓	
callbackAddress	The method and address the responder is to send the TI Response message	Object	Includes Any of: - apiCallbackAddress - emailCallbackAddress	✓	
companyInformation	Information identifying a company recorded in the TI and their connectivity information (used by the Requester to submit a TI Request to them). This can be the seller, buyer or drop ship buyer.	Object	Includes: - gln - companyName - companyAddress - tiRequestConnectivityInformation		✓
contactInformation	Information to aid the Requester or Responder in contacting the other party in regard to the Request or Response.	Object	Includes: - personOrDepartmentName - organizationName - phone - email	✓	✓
contactMethod	Phone number or email address that the Requester or Responder can be contacted with.	String		✓	✓

Attribute	Definition	Type	Notes	TI Request Message	TI Response Message
containerSize	The containerSize of the drug as recorded in the TI	String			✓
dateOfShipment	The date of shipment as recorded in the TI	String			✓
dateOfTransaction	The date of the transaction if recorded in the TI	String			✓
directPurchaseStatement	The direct purchase statement as recorded in the TI	String	Conditional based on referenced TI		✓
dosageForm	The dosage form of the drug as recorded in the TI	String			✓
dropShipIndicator	True if this TI was the result of a drop shipment, False if not	Boolean			✓
dropShipToInformation	Information identifying the Ship To party recorded in the TI if this was a drop ship transaction and their connectivity information (used by the Requester to submit a TI Request to them).	Object	Includes: - companyInformation		✓
drugName	The name of the drug as recorded in the TI record	String			✓
dscsaATPCredential	A W3C standard verifiable credential conformant to the OCI DSCSA ATP Credential specification	Object		✓	✓

Attribute	Definition	Type	Notes	TI Request Message	TI Response Message
dscsaATPEquivalentCredential	A W3C standard verifiable credential conformant with the OCI DSCSA ATP Equivalent Credential specification	Object		✓	✓
dscsaAuthorityCredential	A W3C standard verifiable credential conformant with the OCI DSCSA Authority Credential specification	Object		✓	
dscsaCredentialPresentation	<a href="#">Requester or Responder signed presentation of an ATP, ATP-Equivalent or DSCSA Authority credential. See OCI Schema Version 1.0.0</a>	Object	Formatted as a JSON Web Token (JWT)  Includes one of: - dscsaATPCredential - dscsaATP-EquivalentCredential - dscsaAuthorityCredential	✓	✓
email	The email address of the Requester or Responder	String		✓	✓
emailCallbackAddress	The email address where the TI Response is to be sent	String		✓	
gln	The GS1 Global Location Number (GLN) as recorded in the TI record. See Implementation Guideline: <a href="#">Applying GS1 Standards for DSCSA and Traceability</a>	String	13 Numeric Characters		✓

Attribute	Definition	Type	Notes	TI Request Message	TI Response Message
gtin	The GS1 Global Trade Item Number (GTIN) identifying the Responder. See Implementation Guideline: <a href="#">Applying GS1 Standards for DSCSA and Traceability Conditional based on Request Product ID choice (GTIN or NDC).</a>	String	14 Numeric Characters	✓	✓
individualRequest	A TI request message may contain a number of individual requests for TI on individual drug packages or Lots (DSCSA Authorities only)	Array	Includes: - requestLineNumber - productID - serialNumberOrLotNumber - responseTypeRequested		✓
investiationCircumstances		String		✓	
investigationReasonAttestation	The reason for initiating this TI Request. There are four choices for this mandatory attribute.	String	Choices are: - Suspect Product Investigation - Illegitimate Product Investigation - Recalled Product Investigation - Compliance Audit	✓	
knownOwnerInformation	Information identifying the company recorded in the TI and their connectivity information (used by the Requester to submit a TI Request to them).	Object	Includes: - companyInformation		✓
lotNumber	The Lot number assigned by the Manufacturer or Repackager found in the original Transaction Information.	String	20 Alphanumeric Characters	✓	✓

Attribute	Definition	Type	Notes	TI Request Message	TI Response Message
ndc	The FDA National Drug Code. Conditional based on Request Product ID choice (GTIN or NDC).	String	(4-4-2): #####-####-## or, (5-3-2): #####-####-## or, (5-4-1): #####-####-# or, (5-5-2): #####-####-##	✓	✓
numberOfContainers	As the response is at an individual SNI level, this attribute is always "1"	Number			✓
organizationName	Name of organization requesting TI or responding to a request.	String		✓	✓
ownershipFromInformation	Information identifying the Transfer From party recorded in the TI and their connectivity information (used by the Requester to submit a TI Request to them).	Object	Includes: - companyInformation		✓
ownershipInformationResponses	If the Requester requested all known owners or last known owners, the Responder provides one or more owner information and shipment dates (to sequence the ownership)	Array	Includes: - gtin - ndc - serialNumber - dateOfShipment - dateOfTransaction - knownOwnerInformation		✓
ownershipToInformation	Information identifying the Transfer To party recorded in the TI and their connectivity information (used by the Requester to submit a TI Request to them).	Object	Includes: - companyInformation		✓
personOrDepartmentName	Part of contactInformation. The person or Department that can be contacted regarding the Request or Response.	String		✓	✓



Attribute	Definition	Type	Notes	TI Request Message	TI Response Message
phone	The phone number of the Requester or Responder	String		✓	✓
poAssociatedWithTI	the purchase order number as recorded in the TI	String			✓
productData	Information about the drug product as recorded in the TI	Object	Includes: - gtin - ndc - drugName - strength - dosageForm - containerSize - numberOfContainers		✓
productID	Product ID is defined as either a GTIN or NDC	Object	Includes One of: - GTIN - NDC	✓	✓
productProductionData	Product production information as recorded in the TI	Object	Includes: - lotNumber - serialNumber - expirationDate		✓
recallDepth	Used to mitigate unnecessary returns when the recall doesn't affect the Responder.	String		✓	
recallRequestLevel	A DSCSA Authority may request TI information for an entire Lot, or for a GTIN/NDC and Serial Number (Package) pair.	String	Choices: - Serial Number - Lot Number	✓	

Attribute	Definition	Type	Notes	TI Request Message	TI Response Message
requesterGLN	The GS1 Global Location Number (GLN) identifying the Requester. See Implementation Guideline: <a href="#">Applying GS1 Standards for DSCSA and Traceability</a>	String	13 Numeric Characters	✓	
requestLineNumber	A TI Request message may include many individual Requests. Each individual request is identified by its requestLineNumber to allow easier reference to the request parameters (GTIN/Serial Number, NDC/Serial Number).	Number		✓	✓
requestLineNumberMessage	For each individual request, the responder may also provide a message code and description	Object			✓
responderGLN	The GS1 Global Location Number (GLN) identifying the Responder. See Implementation Guideline: <a href="#">Applying GS1 Standards for DSCSA and Traceability</a>	String	13 Numeric Characters		✓
reponder3911IncidentNumber	The 3911 Incident Number assigned by the FDA to the Responder's 3911 filing	String			✓

Attribute	Definition	Type	Notes	TI Request Message	TI Response Message
responsesToRequest	Each TI Request may result in more than one response. The response is also dependant on the responseTypeRequest. Either TI or ownership (all or last know owner) information is returned	Object	Includes One of: - transactionInformationResponses - ownershipInformationResponses		✓
responseTypeRequested	The type of information the Requester is asking the Responder to provide.	Enumeration	Choices: - Transaction Information - All Known Owners - Last Known Owner	✓	✓
serialNumber	A unique or random number when combined with the GTIN makes a unique identifier for homogeneous cases and packages.	Number		✓	✓
serialNumberOrLotNumber	Paired with product ID to identify a unique package, homogeneous case, or lot	Object	Includes One of: - serialNumber - lotNumber	✓	✓
strength	The strength of the drug as recorded in the TI	String			✓
tiRequestAuditReferences	Includes references to refer back to a particular request.	Object	Includes: - tiRequestID - tiRequestTimestamp	✓	
tiRequestConnectivityInformation	This is the URI and or email address of a company that was indicated in a TI record. The Requester may use this information to submit a TI Request to that party.	Object	Includes Any of: - email address - URI address		✓

Attribute	Definition	Type	Notes	TI Request Message	TI Response Message
tiRequestID	Random number to identify the TI Request Message for response and retention purposes.	String	as Universally Unique Identifier (UUID)	✓	✓
tiRequestingParty	Information about the Requesting Party that initiated a TI Request.	Object	Includes: - dscsaCredentialPresentation - contactInformation - requesterGLN - callBackAddress	✓	
tiRequestParameters	Provides information that the Responder needs to formulate a TI Response and understand the reason and circumstances about the request.	Object	Includes: - responseTypeRequested - investigationResonAttestation - investigationCircumstances - 3911IncidentNumber - recallDepth - recallRequestLevel	✓	
tiRequestResponses	A TI request message may contain a number of individual requests for TI on individual drug packages or Lots (DSCSA Authorities only). Each individual request may result in many responses.	Array	Includes: - individualRequest - responsesToRequest - requestResponseMessage		✓
tiRequests	A TI request message may contain a number of individual requests for TI on individual drug packages or Lots (DSCSA Authorities only)	Array	Includes: - requestLineNumber - productID - serialNumberOrLotNumber	✓	

Attribute	Definition	Type	Notes	TI Request Message	TI Response Message
tiRequestTimeStamp	Date/Timestamp of the TI Request. A timestamp to millisecond precision, with an explicit timezone indicator (+/-hh:mm) relative to UTC	String		✓	
tiRespondingPartyInformation	Information about the Responding Party that initiated a TI Request.	Object	Includes: - dscsaCredentialPresentation - contactInformation - responderGLN		✓
tiResponseAuditReferences	Includes references to refer back to a particular response.	Object	Includes: - tiResponseID - tiRequestID - tiResponseTimestamp		✓
tiResponseID	Random number to identify the TI Response Message for retention purposes.	String	as Universally Unique Identifier (UUID)		✓
tiResponseTimeStamp	Date/Timestamp of the TI Response. A timestamp to millisecond precision, with an explicit timezone indicator (+/-hh:mm) relative to UTC	String			✓

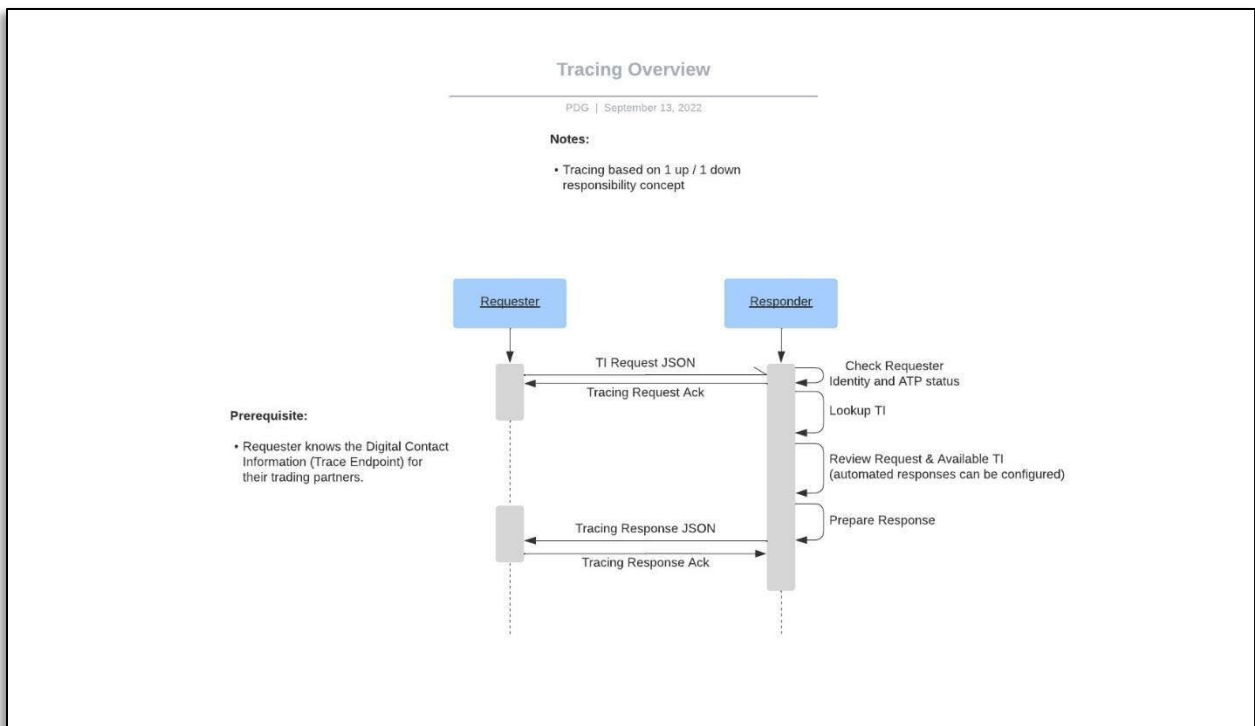
Attribute	Definition	Type	Notes	TI Request Message	TI Response Message
transactionInformationData	This is an individual Transaction Information data set that matches the criteria supplied by the requester.	Object	Includes: - productData - productProductionData - ownershipFromInformation - ownershipToInformation - dropShipIndicator - dropShipToInformation - poAssociatedWithTI - transactionStatement - directPurchaseStatement - dateOfShipment - dateOfTransaction		✓
transactionInformationResponses	If the Requester requested Transaction Information be returned, the Responder provides TI/TS data records in their response.	Array	Includes: - transactionInformationData		✓
transactionStatement	The transaction statement as recorded in the TI	String			✓

## Tracing Choreographies<sup>19</sup>

*Figure 10* depicts the interaction between requesters and responders at a high level. These technical interactions are accomplished through the Requester's and Responder's Trace systems or solutions.

*Figure 11* introduces a sampling of processes a Responder may employ in evaluating the Requester, the Request and the TI/TS data sets that have been identified as matching the Request.

Envisioning a fuller technical set of interactions, *Figure 12* illustrates interactions between Trading partners (Requesters and Responders), their Trace solutions and their Digital Wallet solutions.



*Figure 10 - High-Level Tracing Choreography*

<sup>19</sup> These choreographies are illustrative. All internal processing steps are non-normative and are provided to illustrate how a party might process data received.

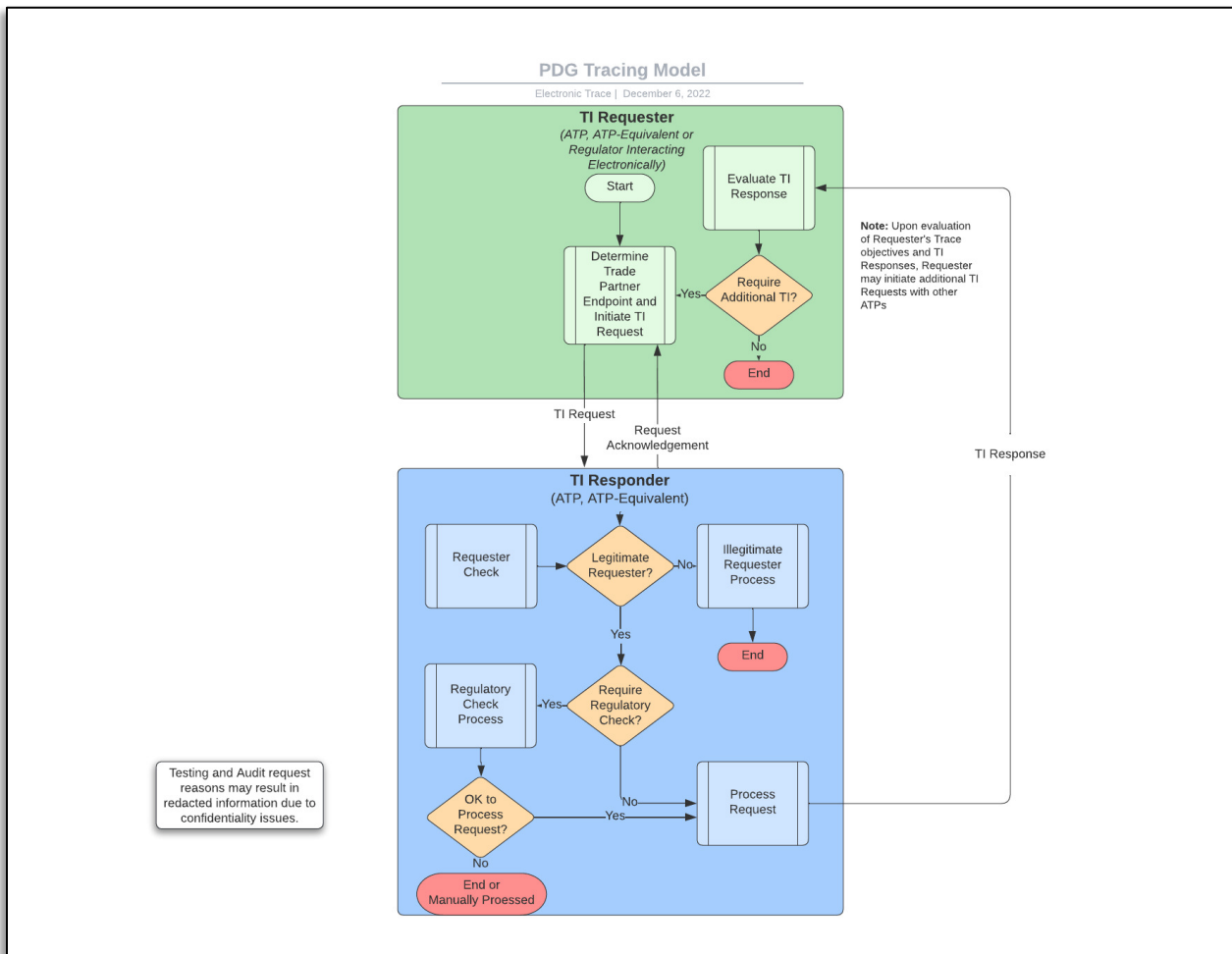


Figure 11 - Illustration: High-Level interaction and decisions of TI Requesters and Responders



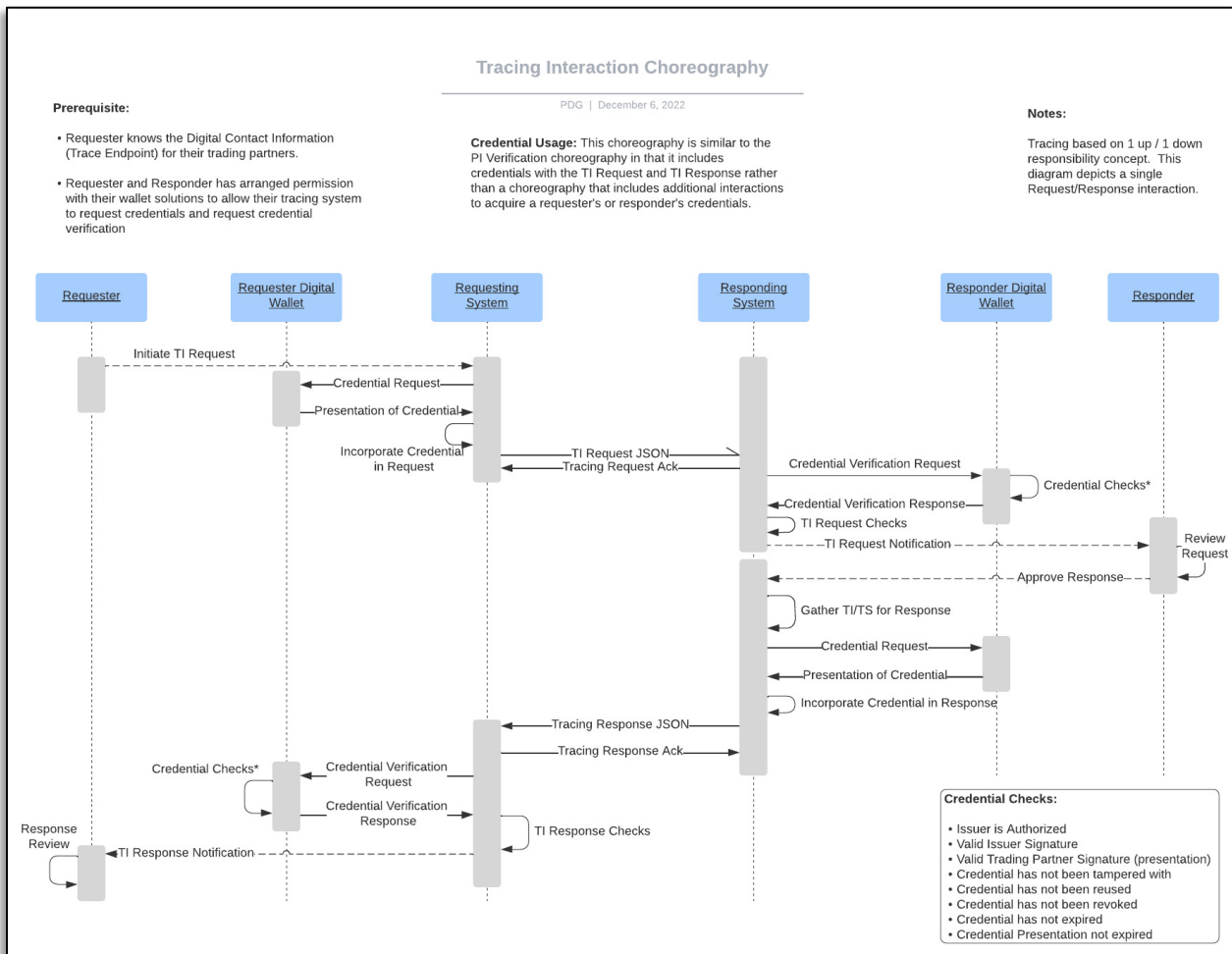


Figure 12 - TI Request / Response End-to-End Interaction

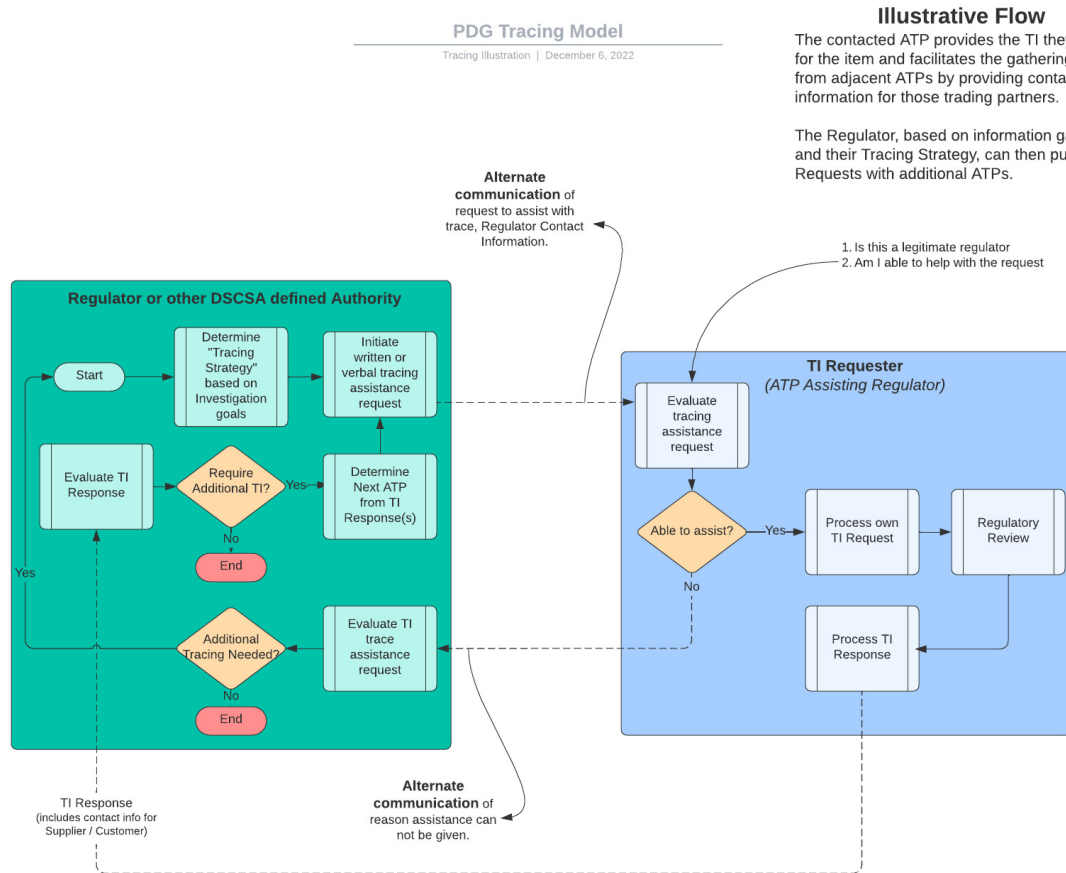
## DSCSA Authorities Not Participating in the PDG-defined EDDS Network

PDG encourages DSCSA Authorities to participate in the PDG-defined EDDS Network by being credentialed as a DSCSA Authority, and by acquiring the capability of transacting TI Requests and receiving TI Responses in the form of the TI Request<sup>20</sup> / TI Response<sup>21</sup> electronic messages. However, it is recognized that not all DSCSA authorities will have the capability to participate in the PDG-defined EDDS network. In these instances, it is recommended that trading partners use elements of the PDG-defined EDDS network architecture as much as possible in responding to requests outside of the network. For example, the data attributes defined in the TI response JSON structures should be used and if the authority

<sup>20</sup> Appendix 1 – TI Request JSON Schema.

<sup>21</sup> Appendix 2 – TI Response JSON Schema.

may have some capability to use the TI response JSON format. *Figure 13* depicts how a trading partner might interact with a DSCSA Authority outside of the PDG-defined network.



*Figure 13 - Assisting a Regulator outside of the PDG-defined EDDS network*

## Trace Endpoint Acquisition

To utilize the trace functionality of the PDG-defined EDDS network, a trading partner (or trading partner designated system) must first acquire Trace Endpoint information for companies they have exchanged (sent and/or received) TI/TS information with.

A prerequisite to initiating a trace via a TI Request is to establish the trace endpoint where the electronic TI Request is to be sent. Solutions to discovering trace endpoints, such as resolvers, routers, look up directories, etc., have been proposed (see *Figure 14*) and will most likely be explored during the next phase of development (Proof of Technology, Proof of Concept or Pilot projects). To provide a baseline solution that allows trading partners to get started, PDG has established the process of Trace Endpoint Acquisition as part of the existing trading partner onboarding. During that process, trading partners share several technical and business information to electronically exchange TI/TS information. The requirement to also exchange each other's Trace Endpoints may not be the most sophisticated architecture, but it does allow for early tracing to take place.

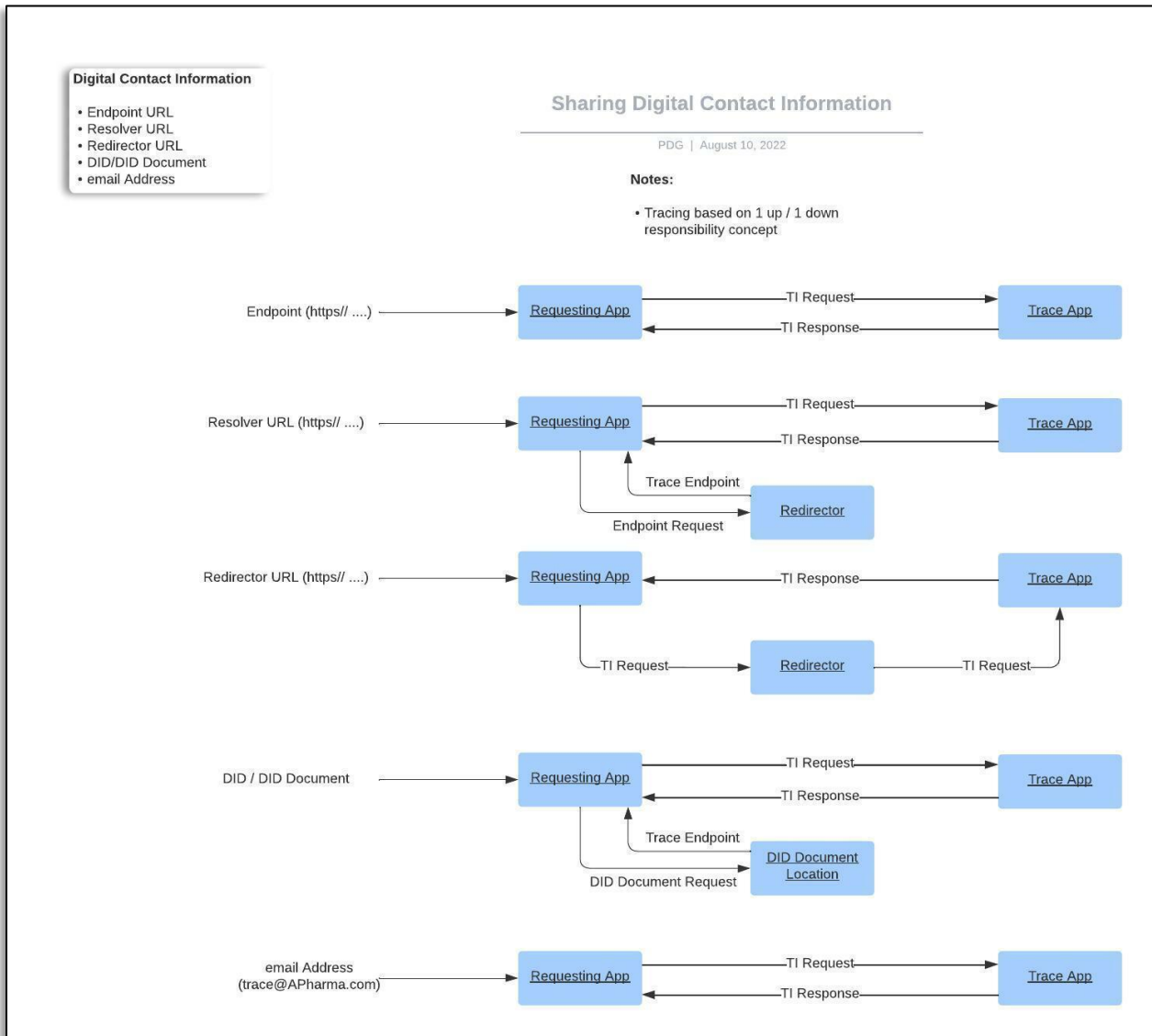


Figure 14 - Trace Endpoint Acquisition Potential Options

## Recommendations

Although the current PDG-defined tracing architecture is flexible and allows for several methods to exchange TI Request and Response messages (email, OpenAPI, DIDComm, etc.), it is expected that the next phases beyond this functional design (piloting, standardizing, implementation) will provide opportunity for increased interoperability and efficiencies by increasing network-wide standardization and mitigating methods that contribute to data quality issues.

PDG expects this architecture to be refined through Piloting and standardization activities. To support and provide momentum to the development and adoption of interoperable tracing solutions, PDG recommends:

1. Trading Partners and Tracing solution providers pilot the defined TI Request / TI Response messages and choreographies documented in this chapter including:
  - a. Assessment of trace volumes,
  - b. trial of TI Request/Response messaging and
  - c. trial of exchange mechanisms
2. GS1 US uses the PDG Tracing model, schemas and choreographies to develop appropriate standard(s) and guideline(s) similar to the GS1 US Implementation Guide developed for PI Verification.

Exchange interface methods and the use of OCI specified credentials are expected to mature and standardize over the transition/adoption period. Examples of how the JSON schemas and credentials might be piloted, assessed and adopted through mature, industry-wide implementations are listed below. Manual processes, by definition, take place outside of the PDG-defined EDDS [electronic] network.

## Configurations Under Consideration

*Figure 15* illustrates some implementation variations that are expected to be explored in the next phase (pilot phase) of development in the realization of the PDG-defined EDDS network. Consideration of trading partner and solution provider capabilities may necessitate a transition period for providing initial trace capability and maturing into mature system support.

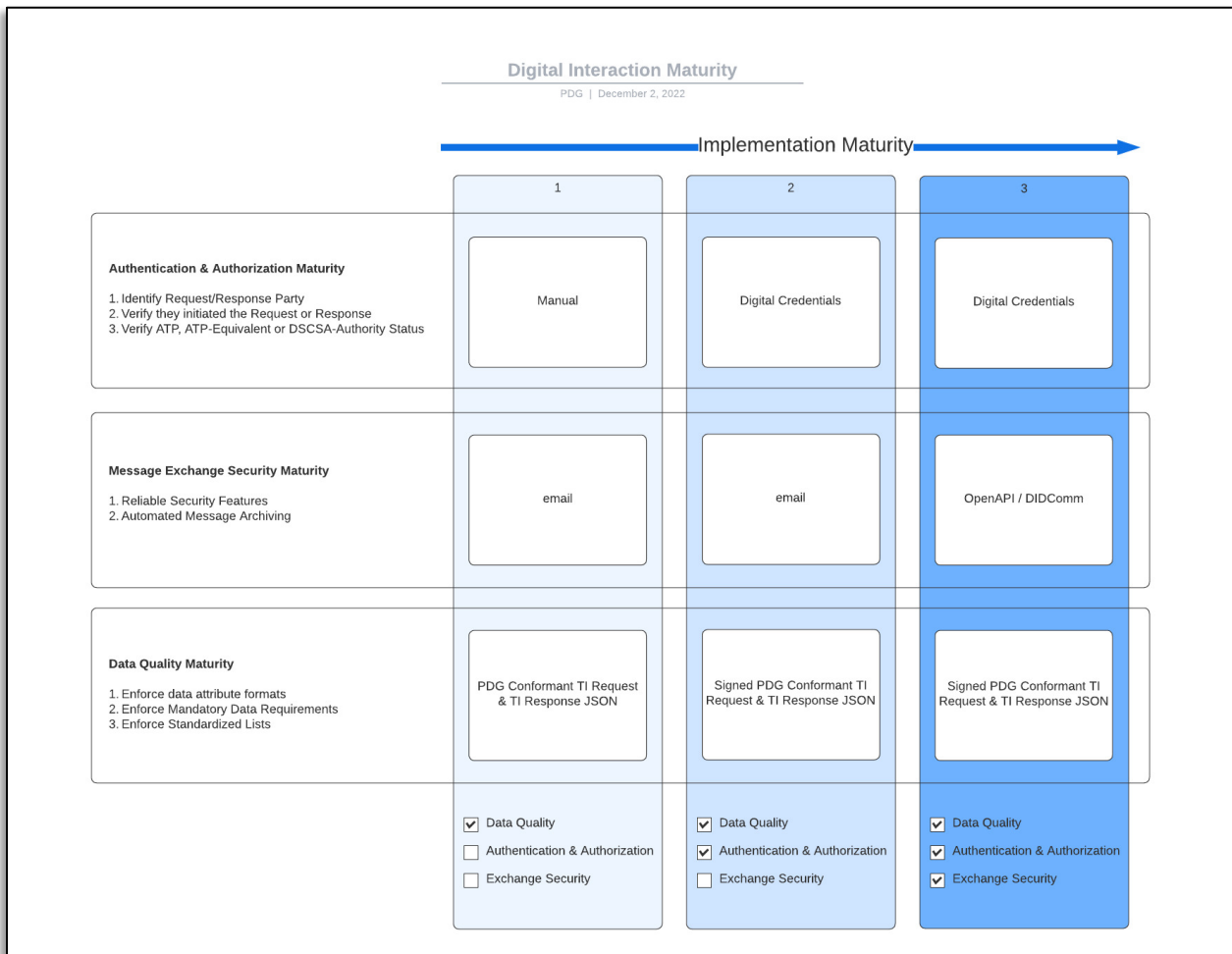


Figure 15 - Trace Network Implementation Maturity

## Considerations

### Understanding Trace information

Tracing attempts to reconstruct the ownership path of a drug case or package, however, there are instances where available TI data may not tell the full story of each case or package. Requesters and Responders are encouraged to communicate these occurrences outside of the EDDS system using the contact information provided in the TI Request and TI Response messages. The following supply chain scenarios create possibilities of ownership gaps in TI/TS exchanged data:

### Returned Product

Each trading partner must provide TI when transferring ownership, however buyers are not required to provide a TI record to the supplier they returned it to. The Buyer's TI data will reflect that the ownership of the case or package was transferred to them, however there will be no TI documenting the transfer back to the supplier. Likewise, the Supplier's TI records might reflect the product being transferred from them twice.

### Dispensed, Destroyed or Expired Product

Several situations exist where a product appropriately leaves the supply chain and DSCSA-recorded ownership is ended. There is no additional TI available.

### **Intracompany Transfers**

Trading partners are not required to record and exchange TI records if the product is transferred to another part of the owning or controlling company. The inbound TI and outbound TI may be held in different subsidiary systems.

*Figure 16* Illustrates intercompany transfer scenarios based on DSCSA TI/TS exchange strategies of two wholesalers.

**Scenario 1:** Wholesaler 1 establishes the parent company (HQ) as the Transfer-To party for all their purchases and Transfer-From party for their sales. Wholesaler 1 has two subsidiary companies (1A and 1B).

1. The Manufacturer sells product to Wholesaler 1 (HQ) and ships to its subsidiary, Wholesaler 1A.
2. The Manufacturer's TI/TS reflects the Manufacturer as the Transfer-From entity and Wholesaler 1 (HQ) as the Transfer-To party (they may reflect 1A as the Ship-To party in their EPCIS shipping event).
3. Intracompany transfers occur between Wholesaler 1A and Wholesaler 1B. No TI/TS is exchanged between 1A and 1B.
4. Wholesaler 1 sells product to the Dispenser and ships the product from its 1B subsidiary location.
5. Wholesaler 1's (HQ) TI/TS reflects Wholesaler 1 as the Transfer-From entity and the Dispenser as the Transfer-To party (they may reflect 1B as the Ship-From party in their EPCIS shipping event).

When tracing of products transacted by Wholesaler 1 occurs, Wholesaler 1's system holds TI/TS records that explicitly link the purchased items and sold items with Wholesaler 1, even though intracompany transfers occurred.

**Scenario 2:** Wholesaler 2 has two subsidiary companies (2A and 2B). Wholesaler 2 establishes the subsidiary company Wholesaler 2A as the Transfer-To party for all their purchases. Product is exchanged between Wholesaler 2A and Wholesaler 2B (sibling subsidiaries). Wholesaler 2B is established as the Transfer-From party for their sales.

1. The Manufacturer sells product to Wholesaler 2A (subsidiary of Wholesaler 2) and ships to Wholesaler 2A.
2. The Manufacturer's TI/TS reflects the Manufacturer as the Transfer-From entity and Wholesaler 2A as the Transfer-To party (they may also reflect 2A as the Ship-To party in their EPCIS shipping event).
3. Intracompany transfers occur between Wholesaler 2A and Wholesaler 2B. No TI/TS is exchanged between 2A and 2B.
4. Wholesaler 2B sells product to the Dispenser and ships the product from its location.
5. Wholesaler 2B's TI/TS reflects Wholesaler 2B as the Transfer-From entity and the Dispenser as the Transfer-To party (they may also reflect 2B as the Ship-From party in their EPCIS shipping event).

When tracing of products transacted by Wholesaler 2's subsidiaries occurs, Wholesaler 2A's system holds TI/TS records that explicitly link the purchased items with Wholesaler 2A. Wholesaler 2B's TI/TS system holds records that explicitly link the sold items with Wholesaler 2B. It is in Wholesaler 2's best interest to establish records of intracompany transfers for DSCSA tracing purposes, otherwise, a TI Request initiated by the Dispenser, to Wholesaler 2B may not return the TI issued by the Manufacturer to Wholesaler 2A, breaking the TI trace collection.



*Figure 16 - Illustrations of Intracompany Transfers*

### Repackaged Product

Sec. 582(e)(2)(A)(iv) of the statute requires Repackagers to “associate the product identifier the repackager affixes or imprints with the product identifier assigned by the original manufacturer of the product”. This association information is not TI data (ownership transfer) and will not be reflected in a TI Response to a TI Request for either the original manufacturer’s product or the repackaged product.

### Misalignment Exceptions and Tracing

Chapter 3 – TI/TS exchange includes guidance on managing misalignment exceptions. The result of misalignment exceptions management may result in replacement TI record(s), however, some exceptions may not and may affect a trading partner’s ability to provide trace information.

### Technical Requirements

ID	Functional Requirement
Trace-FR-001	Trading partners (ATPs and ATP Equivalents) SHALL provide their Trace Endpoint to their customer and supplier trading partners.
Trace-FR-002	Should a company’s Trace Endpoint change, trading partners (ATPs and ATP Equivalents) SHALL provide their updated Trace Endpoint to their customer and supplier trading partners.
Trace-FR-003	Trading Partners (or their Solutions) SHALL retain Trace Request and Response records for 6 years after a Suspect Product Investigation or Illegitimate Product investigation.
Trace-FR-004	A TI Request May include requests for one or more Product ID <sup>22</sup> / Serial Number pair.
Trace-FR-005	A TI Request Must indicate a single investigation type (Suspect, Illegitimate or Recall), or compliance audit
Trace-FR-006	Suspect Product Investigations SHALL only allow for package or case level requests.
Trace-FR-007	Illegitimate Product Investigations SHALL only allow for package or case level requests.
Trace-FR-008	Recalled Product Investigations SHALL only be submitted from a DSCSA Authority AND allow for package or case level requests or Lot level requests.
Trace-FR-009	A set of TI Requests SHALL only specify a GTIN/Serial Number pair, a NDC/Serial Number Pair, a GTIN/Lot Number pair (Recalls) or a NDC/Lot Number pair (Recalls).
Trace-FR-009	Responders may need additional time for a particular Product ID / Serial Number request. If that is the case, a response of “Response Pending” is given and a Response is provided later. This does not relieve trading partners of turnaround time as specified in the DSCSA (24 hrs) or FDA Guidances.

<sup>22</sup> GTIN or NDC.



Trace-FR-010	If a response is given for a particular item, and you later need to correct or provide additional data, a replacement or additional response can be made.
Trace-FR-011	Responders Shall return the “No TI Response” message if they do not have TI records for a particular request.
Trace-FR-011	Trace solutions implementing the TI Request and TI Response via OpenAPI, DIDcomm, etc.) shall implement a connectivity check.
Trace-FR-012	If trading partners are using email to transport TI Requests and TI Responses, an acknowledgment of the TI Request or TI Response SHALL be sent to the requester or responder.
Trace-FR-013	TI Request and TI Response message formats shall conform to a standardized message structure based on PDG-defined EDDS network’s JSON schemas for tracing.

## Open Issues

ID	Issue
Trace-Issue-001	Architecting a means for DSCSA Authorities to acquire Trace Endpoints
Trace-Issue-002	Establish POT, POC, Pilot(s) to exercise and validate the JSON TI Request and TI Response messages.
Trace-Issue-003	Provide the TI Request and TI Response messages and choreography to GS1 US for standardization process.
Trace-Issue-003	Establish a sunrise date for mandatory use of digital credentials (ATP, ATP-Equivalent and DSCSA Authority) within the PDG-defined EDDS network.
Trace-Issue-004	Addressing how trading partners respond to a request in situations where available TI data does not reflect the true ownership of a case or package.

## Appendix A

Term/Acronym	Definition	Notes
TI/TS Trace	The aggregate of a series of TI/TS data gathered from trading partners about a package or case. The Requester may continue gathering individual TI/TS datasets until the needs of their investigation are satisfied. Each subsequent Responder provides information based on the TI/TS data sets they have been sent <sup>23</sup> or have sent to their suppliers and customers.	
TI Requester or Requester	Represents the ATP, ATP-Equivalent or DSCSA Authority requesting TI from an ATP or ATP-Equivalent entity, usually through their TI Request/Response system.	
TI Responder or Responder	Represents the ATP or ATP-Equivalent responding to TI Requests from an ATP, ATP-Equivalent or DSCSA Authority, usually through their TI Request/Responding system.	
DSCSA Trace Solution	A computer application used to create, store and exchange TI requests and TI Responses. TI Request/Response systems must be able to interoperate with other TI Request/Response systems and Digital Wallets. These applications may be built in-house or supplied by a Solution Provider.	
DSCSA Enabled Digital Wallet	An application or service supporting Verifiable Credentials, Decentralized Identifiers and specific interactions supporting PI Verification and Tracing.	
Trace Endpoint	A Trace Endpoint is the electronic address where an ATP or ATP-Equivalent receives electronic TI Requests conformant with the PDG TI Request message <sup>24</sup> . In the TI Response message <sup>25</sup> the Trace Endpoint is either the digitalContactEmailAddress or the digitalContactURIAddress.	

## Standards, Specifications, and Guidelines

Currently, there are no standards for tracing that meet the requirements laid out in the DSCSA statute and the Tracing section of Chapter 1 of the PDG Blueprint. PDG has developed a set of draft JSON schemas representing a TI Request and TI Response that are appropriate for proof of concepts and piloting. The

<sup>23</sup> For the purposes of this document, having possession of a TI/TS dataset and having access to a TI/TS data set represent the transfer of TI/TS and carry the same meaning.

<sup>24</sup> [Appendix 1 – TI Request JSON Schema](#).

<sup>25</sup> [Appendix 2 – TI Response JSON Schema](#).

Recommendations section calls for PDG to request GS1 US to use these schemas as a starting point to develop formal standards and guidelines for use to support DSCSA requirements.

*Table 1 – Tracing Reference Documents*

Reference Document	Version	Publisher	Notes
PDG TI Request Message (JSON)	PoC v13	PDG	
PDG TI Response Message (JSON)	PoC v14	PDG	

### Change Control

Date of Change	Section	Description of Change	Approved By
Version 1.2			
4/4/2023	Ch. 5 Table 1 and Schemas	Corrections and additions of schemas	PDG Board of Directors